

# Reading LED Driver Date Codes

LED Drivers from Hubbell Lighting Components/Thomas Research Products include a date code label with a barcode or QR code and information critical to traceability. The style of machine code is specific to each product line. This document is designed to help you understand each code.

PROGRAMMABLE

## SelectSYNC 25W, 40W Compact Drivers

The 12-digit alphanumeric number under the machine code reads this way:

**YYWWFC123456**

YYWW = Date Code (YY = Year, WW = Week)

FC = Factory Code (2 digits)

123456 = Serial Number (6 digits)



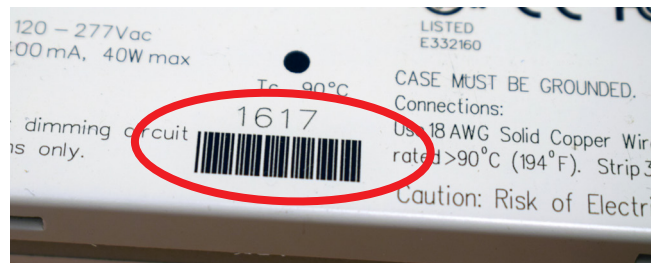
PROGRAMMABLE

## SelectSYNC 40W, 75W Linear Drivers

The 4-digit numeric number above the machine code reads this way:

**WWYY**

YYWW = Date Code (YY = Year, WW = Week)



PROGRAMMABLE

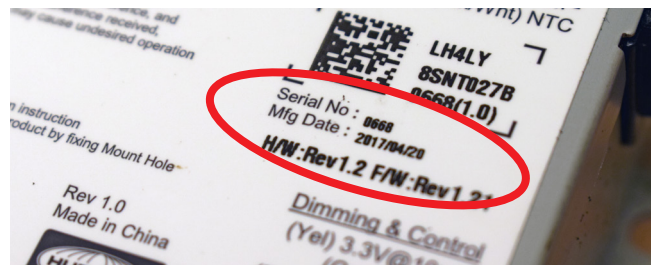
## SelectSYNC 30W/50W Linear, 27W Drivers

The 4-digit serial number 10-digit manufacturing date under the machine code reads this way:

**Serial No: 1234**

**Mfg Date: YYYY/MM/DD**

These drivers also note the Hardware and Firmware rev.



# Reading LED Driver Date Codes

**CLASSIC**

## LED-M Series Metal Case Drivers - Version 2

The 10-digit alphanumeric number on the side panel reads this way:

**FFYYWWI234**

FF = Factory code

YY = Year

WW = Week

I234 = Serial Number (4 digit)



**CLASSIC**

## LED Series Drivers

The 11-digit alphanumeric number under the machine code reads this way:

**YYWWFCI2345**

YYWW = Date Code (YY = Year, WW = Week)

FC = Factory Code (2 digits)

I2345 = Serial Number (5 digits)



**CLASSIC**

## PLED Series Drivers

The 11-digit alphanumeric number under the machine code reads this way:

**YYWWFCI2345**

YYWW = Date Code (YY = Year, WW = Week)

FC = Factory Code (2 digits)

I2345 = Serial Number (5 digits)



**EMERGENCY**

## LBU Series Emergency LED Drivers

The 15-digit alphanumeric number on the side panel reads this way:

**VVVVDDDY#####**

VVVVV = Vendor code

DDD = Julian Day

YY = Year

##### = Serial Number (4 digit)



# Reading LED Driver Date Codes

OBSOLETE

## LEG Series Drivers

The 11-digit alphanumeric number under the machine code reads this way:

**YYWWFC12345**

YYWW = Date Code (YY = Year, WW = Week)

FC = Factory Code (2 digits)

12345 = Serial Number (5 digits)



OBSOLETE

## TRC/TRV Series Drivers

The 12-digit alphanumeric number to the right of the part number, above the machine code reads this way:

**I23456XFWWYY**

I23456 = Serial Number (6 digits)

X = Product Code (1 digit)

F = Factory Code (1 digit)

WWYY = Date Code (WW = Week, YY = Year)



OBSOLETE

## LED-M Series Metal Case Drivers - Version I

The 13-digit number under the machine code reads this way:

**F1234YYWW5678**

F = Factory Code (1 digit)

YYWW = Date Code (YY = Year, WW = Week)

1234 / 5678 = Serial Number (8 digits)



OBSOLETE

## LED-M Series Metal Case Drivers - Version II

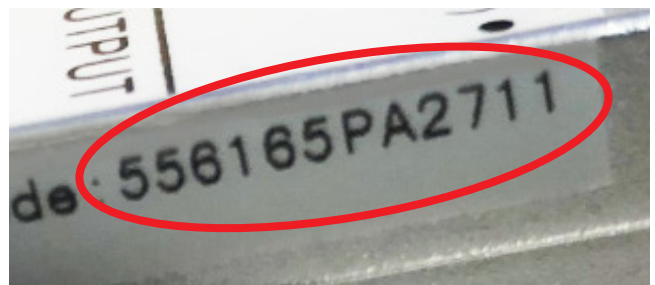
The 13-digit number under the machine code reads this way:

**I23456FFWWYY**

I234 / 5678 = Serial Number (8 digits)

FF = Factory Code

WWYY = Date Code (WW = Week, YY = Year)





# Reading LED Driver Date Codes

OBSOLETE

## LED-M Series Plastic Case Drivers

The 10-digit number under the machine code reads this way:

**12YYWWI234**

12 = Product Code (2 digits)

YYWW = Date Code (YY = Year, WW = Week)

I234 = Serial Number (4 digits)

(Possible 11th digit = Factory Code)



OBSOLETE

## LED50WPR2T5 Series Drivers

The 12-digit alphanumeric number under the machine code reads this way:

**FYWWOOU12345** Example (3G2202Z52706)

F = Factory Code

Y = Year (G=2016, H=2017, etc)

WW = Week

OO = Work Order

N = Driver Model Number

I2345 = Serial Number (5 digit)

